

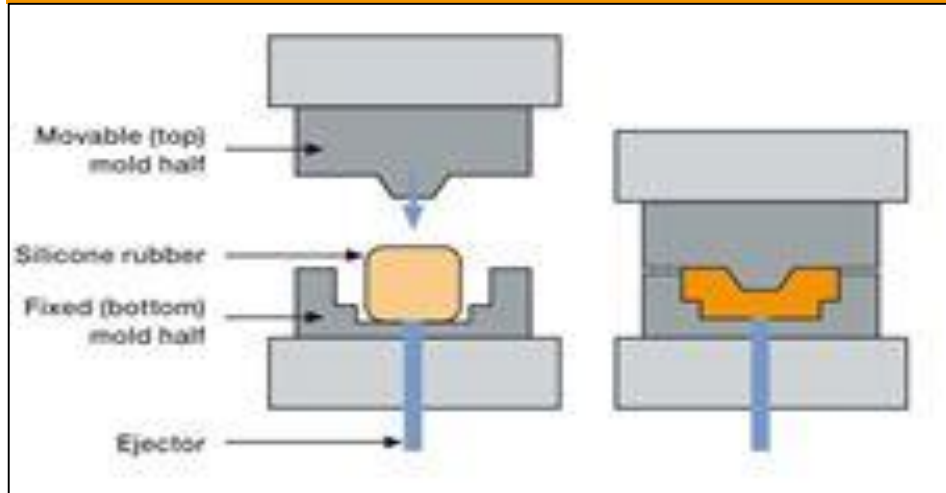
# Decision Tree: Healthcare Rubber Molding

(click only on colored boxes to select)

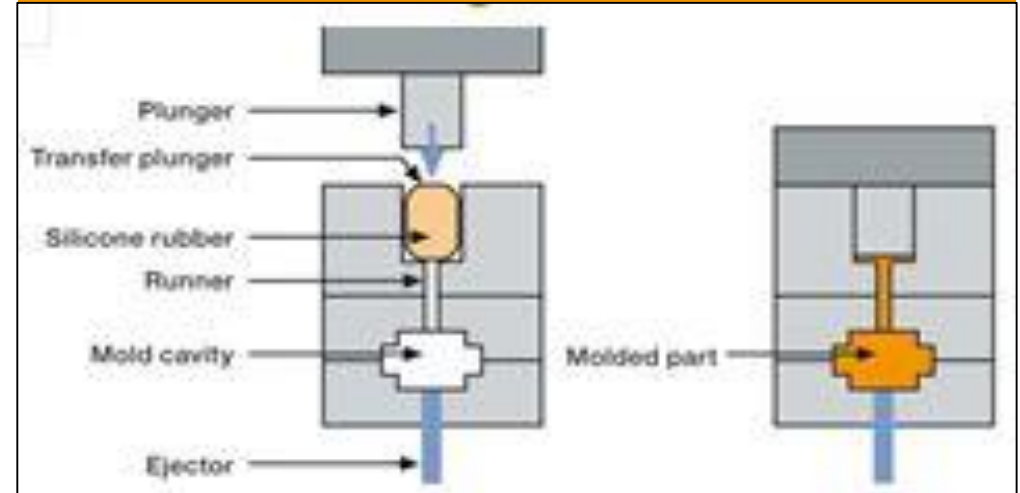
What type of Molding will you be doing?

**Make sure application meets Wacker Healthcare Guidelines.  
Products only to be recommended for < 29 day implant.**

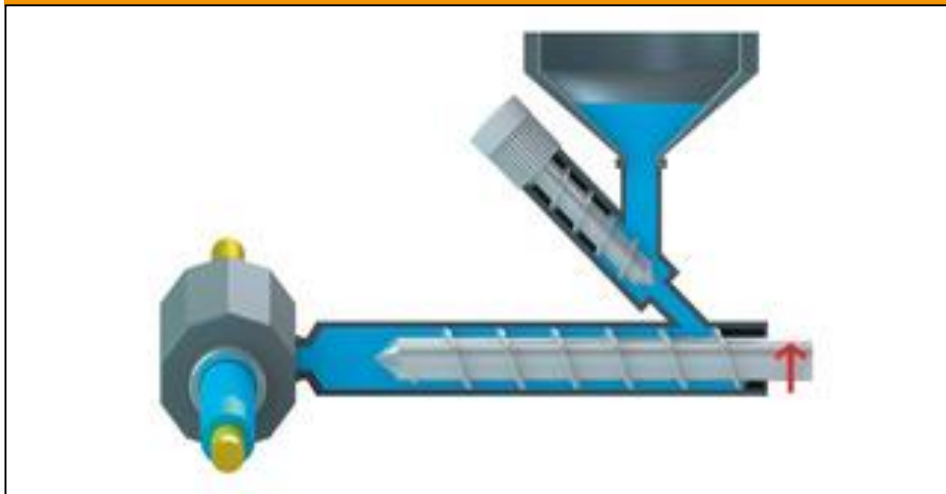
## Compression



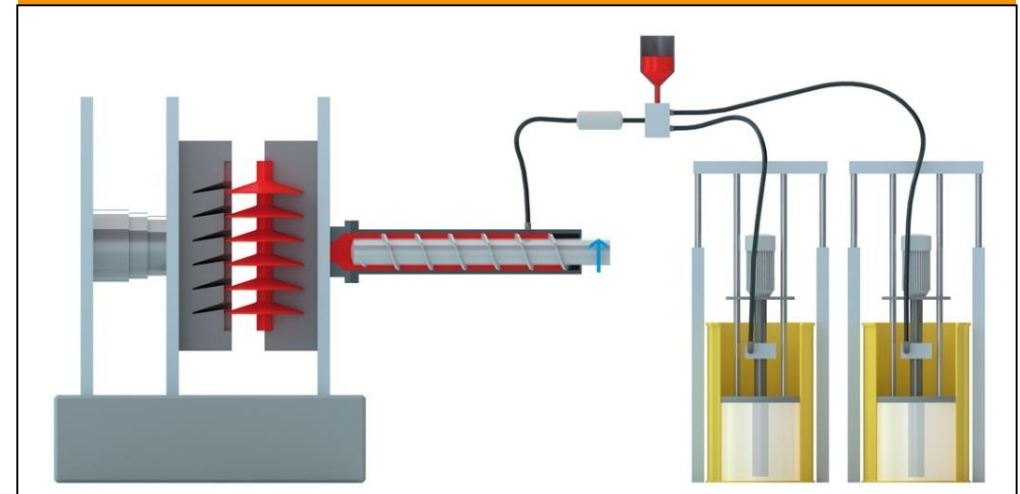
## Transfer



## Extrusion

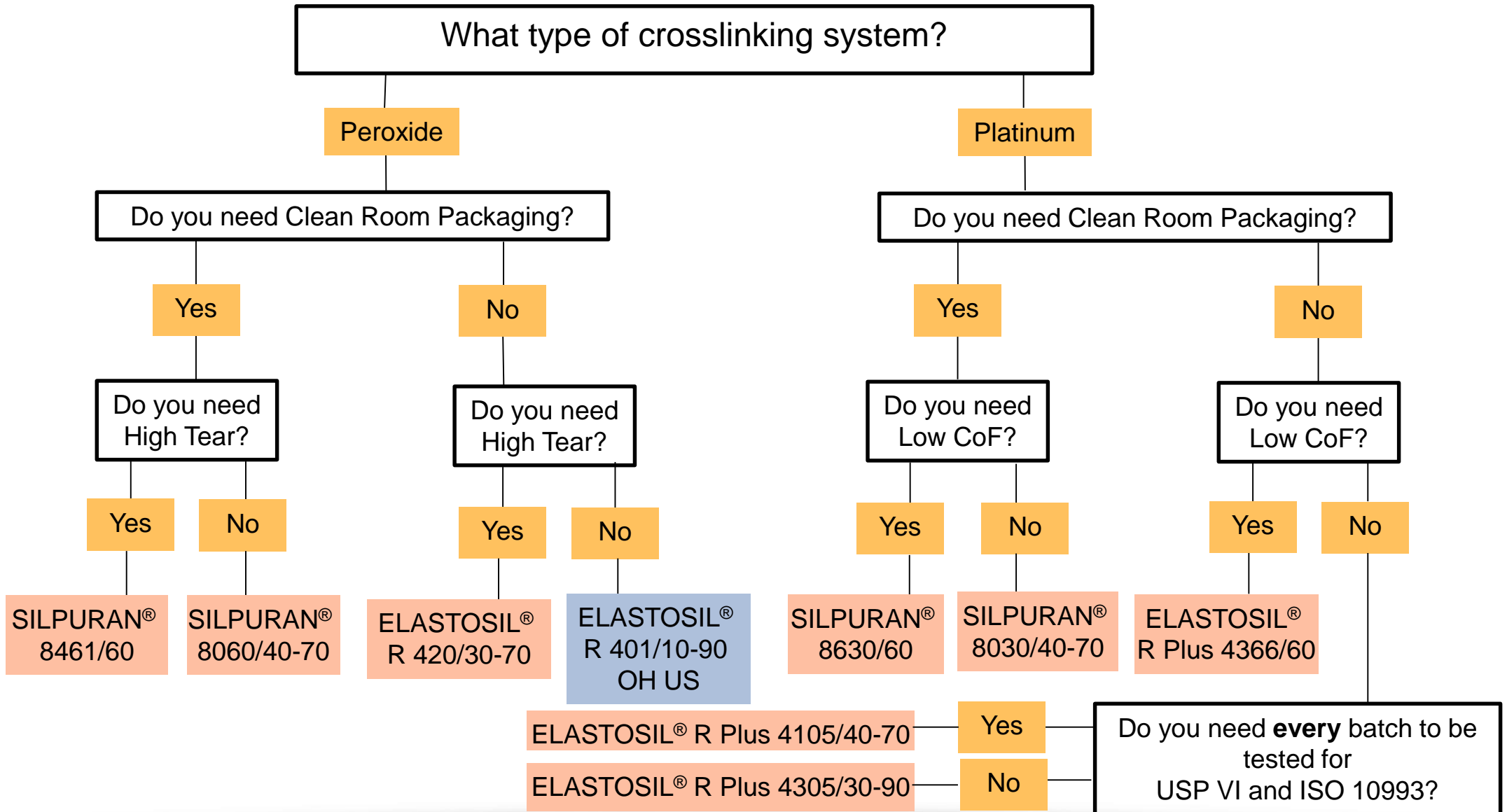


## Injection



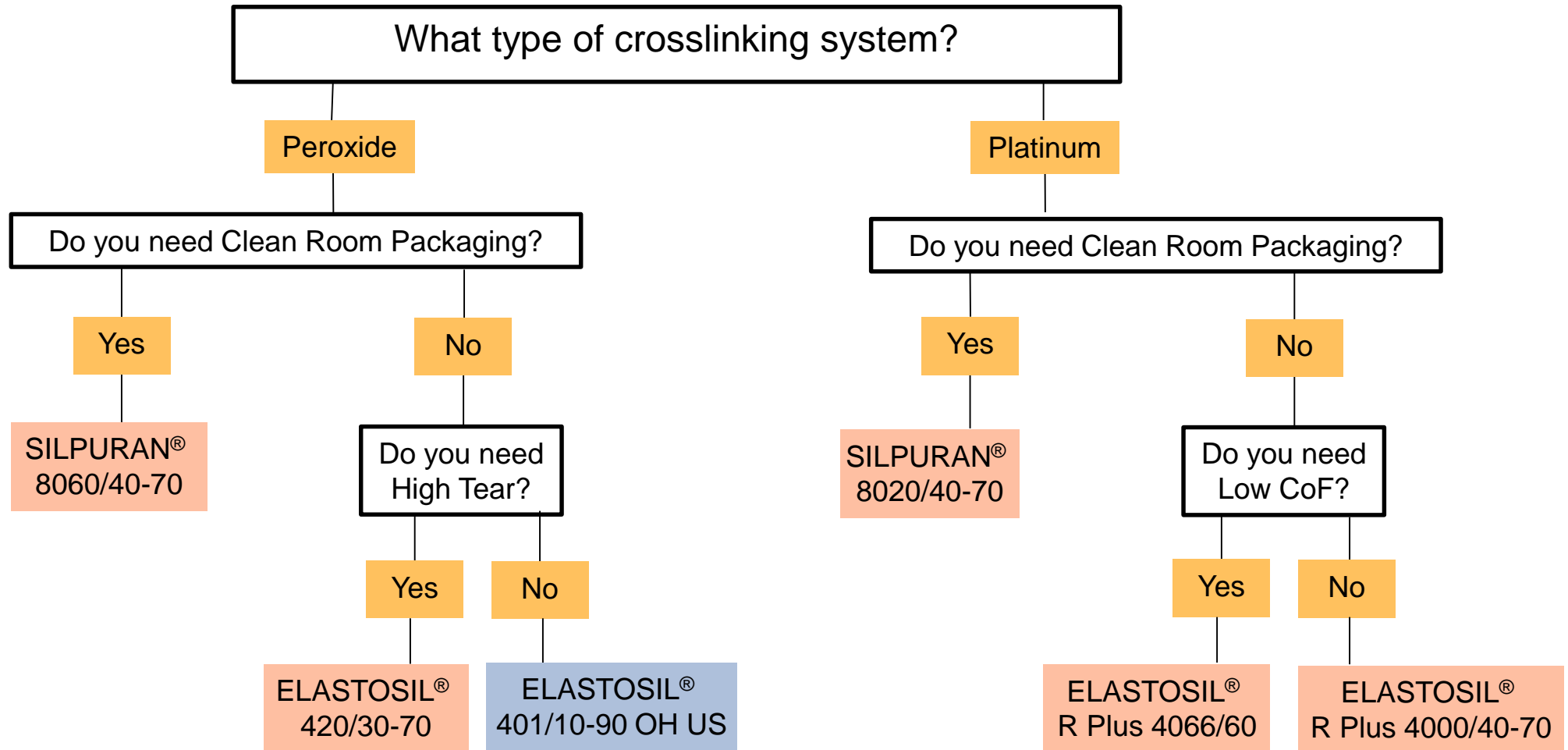
# Decision Tree: Extrusion Molding

click only on colored boxes to select  
Blue = US produced; Pink = EU produced



# Decision Tree: Compression /Transfer Molding

click only on colored boxes to select  
Blue = US produced; Pink = EU produced



# Decision Tree: Injection Molding

click only on colored boxes to select  
Blue = US produced; Pink = EU produced

Do you need Clean Room Packaging?

Yes

What properties do you need?

Standard

SILPURAN® 6000/5-70 A/B

High Tear

SILPURAN® 6400/40-60 A/B

Low CoF

SILPURAN® 6600/40-60 A/B

Non-Healing

SILPURAN® 6610/40-80 A/B

Self Adhesive

SILPURAN® 6700/40-60 A/B

Self Adhesive & Low CoF

SILPURAN® 6760/50 A/B

No

What properties do you need?

Standard

ELASTOSIL® LR 3003/3-85 A/B

High Tear

ELASTOSIL® LR 3040/30-60 A/B

Low CoF

ELASTOSIL® LR 3066/30-80 A/B

Self Adhesive

ELASTOSIL® LR 3071/30-60 A/B