

TECHNOLOGY UPDATE

LoPro® Radiopaque Compounds

Today's catheters are used to diagnose and treat smaller and more distal areas of the vascular pathway, requiring smaller device components than ever before. Many of these devices must be visible under fluoroscopy to ensure proper placement during the procedure; yet, plastics used for the construction of these devices are inherently transparent to x-ray and fillers must be blended into the polymers to provide the required radiopacity. LoPro® radiopaque compounds include a wide range of the most advanced radiopaque fillers and polymers to create high quality compounds required for small, 'low profile' device designs.

Applications for LoPro® Compounds

LoPro compounds are selected for traditional as well as the most advanced devices in a range of therapies:

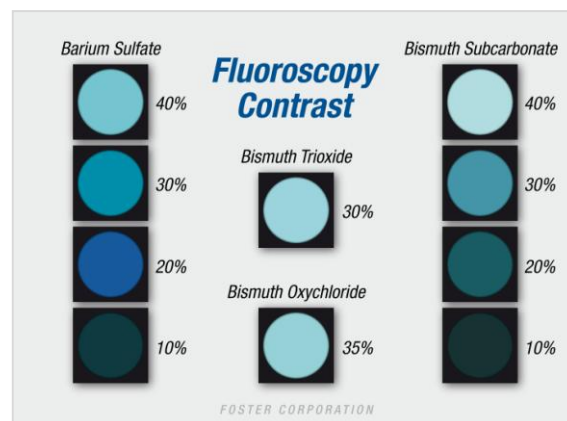
Interventional Cardiology – Percutaneous

Transluminal Coronary Angioplasty (PTCA) devices now reach smaller vascular pathways in and around the heart to deploy balloons that deliver life saving stents. LoPro compounds provide necessary visibility for physicians navigating these small, thin wall catheter shafts to the therapeutic region. LoPro tungsten filled polymers replace gold marker bands for substantial visibility and location of the device distal tip.

Interventional Radiology – Small diameter, multi-lumen catheters of today allow for a wide range of therapeutic applications in radiology that require radiopaque compounds. LoPro barium formulations, particularly in urethanes that soften at body temperature, are ideal for peripherally inserted lines and drainage catheters. Increased pushability to reach more distal vascular regions for angiographic imaging or therapeutic ablation will benefit from a wide selection of LoPro formulations based on polyamide-based polymers with bismuth radiopacifiers.

Neurology – Neurological catheters demand excellent mechanical properties to reach the distant therapeutic site from the point of vascular insertion, and sufficient radiopacity for visibility of the small diameter, thin wall catheters. LoPro tungsten filled compounds provide excellent visibility for diagnostic and therapeutic catheters. LoPro bismuth filled compounds have been designed for applications such as embolization catheters used to block abnormal blood vessels, most commonly to prevent aneurysms.

Implants – The use of polymers structural devices from spinal cages to dental implants is rapidly expanding. Radiopaque additives allow implanted polymers such as PEEK or polyethylene to remain visible to the physician well after surgery. Foster's dedicated clean room compounding operations are designed to manufacture LoPro radiopaque formulations for implant devices under cGMP conditions.



Radiopaque Fillers

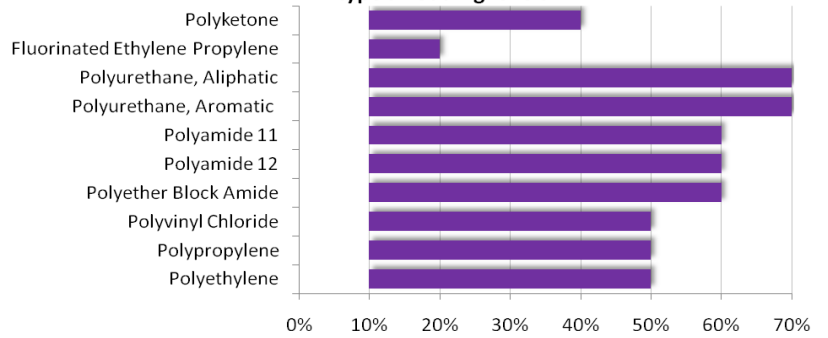
Barium Sulfate ($BaSO_4$) was the first radiopaque filler widely used in medical formulations. It is a relatively inexpensive white powder that has excellent process stability. High loadings are required for comparable radiopacity to other fillers. Because it has poor tinting strength, it is relatively easy to color.

Bismuth Subcarbonate ($Bi_2O_2CO_3$) offers greater radiopacity than barium sulfate and can be added in less quantity to achieve comparable results. It is a white powder with high tinting strength, thus limiting color matching in some instances. It is limited by processing temperatures (yellows at 400 F) and in some polymers (not compatible with thermoplastic polyurethanes).

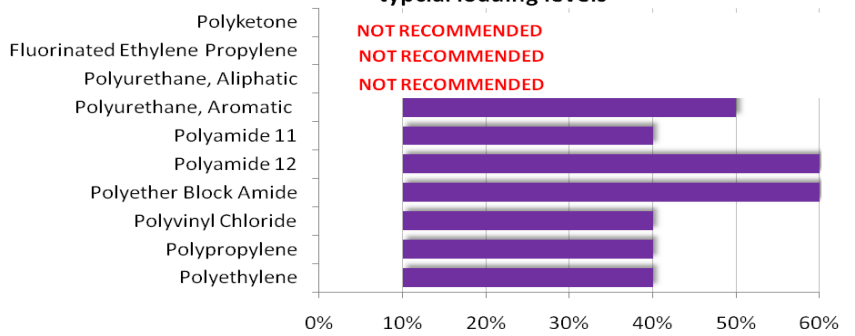
Bismuth Oxychloride ($BiOCl$) provides excellent radiopacity and is compatible with a wide range of polymers. It is more temperature stable than bismuth subcarbonate. White 'platelet-like' particles provide a smooth, pearlescent finish on components. This can provide limitations to exact color matches.

Bismuth Trioxide (Bi_2O_3) also offers excellent radiopacity in comparably lower loadings and is compatible with most polymers. It is yellow in color and can turn brown at elevated processing temperatures, limiting color matching. Gritty surfaces in finished parts limit use in thin wall and critical surface components.

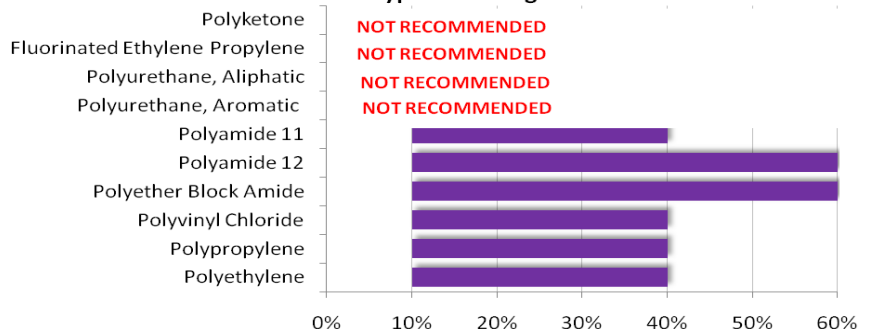
Barium
typical loading levels



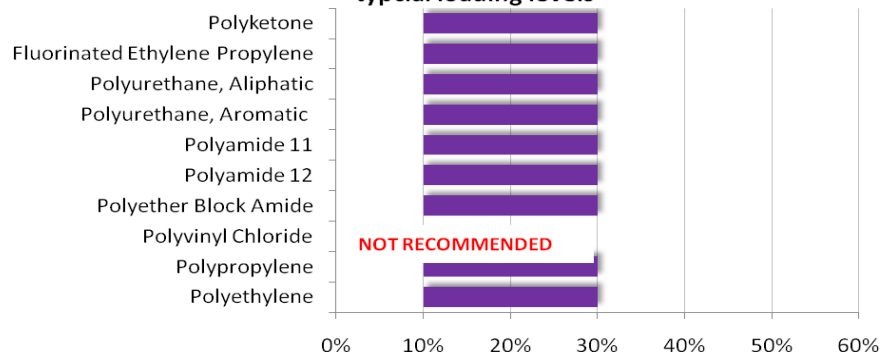
Bismuth Subcarbonate
typical loading levels



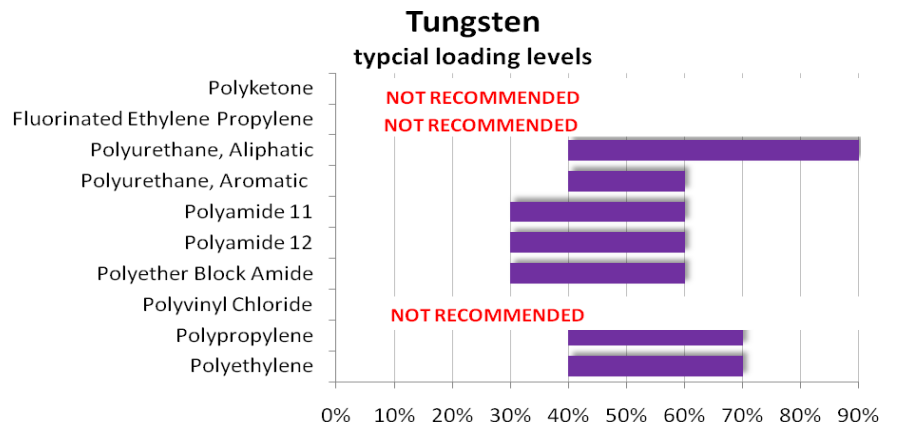
Bismuth Oxychloride
typical loading levels



Bismuth Trioxide
typical loading levels



Tungsten (W) is a very heavy metal powder that is compatible with virtually all polymers at very high loadings by weight. It is dark gray in color and produces a matte finish in high concentrations, providing substantial restrictions for color matching. Polymer compounds with tungsten can be very abrasive on processing equipment. However, it is a filler of choice in very thin walled devices where radiopacity is critical.



Radiopaque Filler	Specific Gravity (gm/cm ³)	Particle Size (µm)
Barium Sulfate	4.4	0.5-2
Bismuth Subcarbonate	8	1-2
Bismuth Oxychloride	8.9	1-2
Bismuth Trioxide	7.8	2-12
Tungsten	19.3	1-2

About Foster

Foster Corporation supplies custom biomedical polymers for the medical device industry, including custom compounds for minimally invasive devices, polymers blends for implants, and drug/polymer blends for combination products. For more information, please call or visit us at:

Foster Corporation

45 Ridge Road
 Putnam, CT 06260
 (860) 928-4102
www.fostercomp.com

Foster Corporation (Foster) believes that the information contained in this document is an accurate description of the typical characteristics and/or uses of the product or products, but it is the customer's responsibility to thoroughly test the product in each specific application to determine its performance, efficacy and safety for each end-use product, device or other application. Suggestions of uses should not be taken as inducements to infringe any particular patent. The information and data contained herein are based on information we believe reliable. Mention of a product in this documentation is not a guarantee of availability. Foster reserves the right to modify products, specifications and/or packaging as part of a continuous program of product development. FOSTER MAKES NO WARRANTIES, EXPRESS OR IMPLIED, INCLUDING, WITHOUT LIMITATION, A WARRANTY OF FITNESS FOR A PARTICULAR PURPOSE OR OF INTELLECTUAL PROPERTY NON-INFRINGEMENT, INCLUDING, BUT NOT LIMITED TO PATENT NON-INFRINGEMENT, WHICH ARE EXPRESSLY DISCLAIMED, WHETHER EXPRESS OR IMPLIED, IN FACT OR BY LAW. FURTHER, FOSTER MAKES NO WARRANTY TO YOUR CUSTOMERS OR AGENTS, AND HAS NOT AUTHORIZED ANYONE TO MAKE ANY REPRESENTATION OR WARRANTY OTHER THAN AS PROVIDED ABOVE. FOSTER SHALL IN NO EVENT BE LIABLE FOR ANY GENERAL, INDIRECT, SPECIAL, CONSEQUENTIAL, PUNITIVE, INCIDENTAL OR SIMILAR DAMAGES, INCLUDING WITHOUT LIMITATION, DAMAGES FOR HARM TO BUSINESS, LOST PROFITS OR LOST SAVINGS, EVEN IF FOSTER HAS BEEN ADVISED OF THE POSSIBILITY OF SUCH DAMAGES, REGARDLESS OF THE FORM OF ACTION.